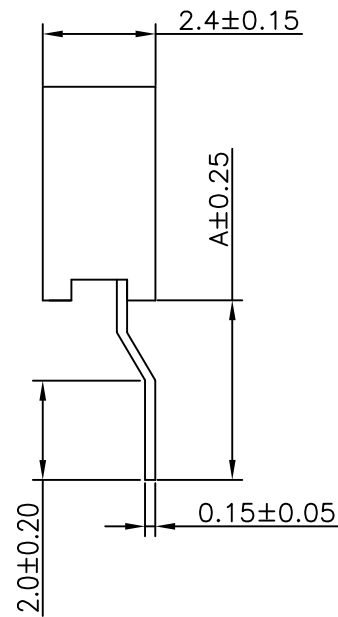
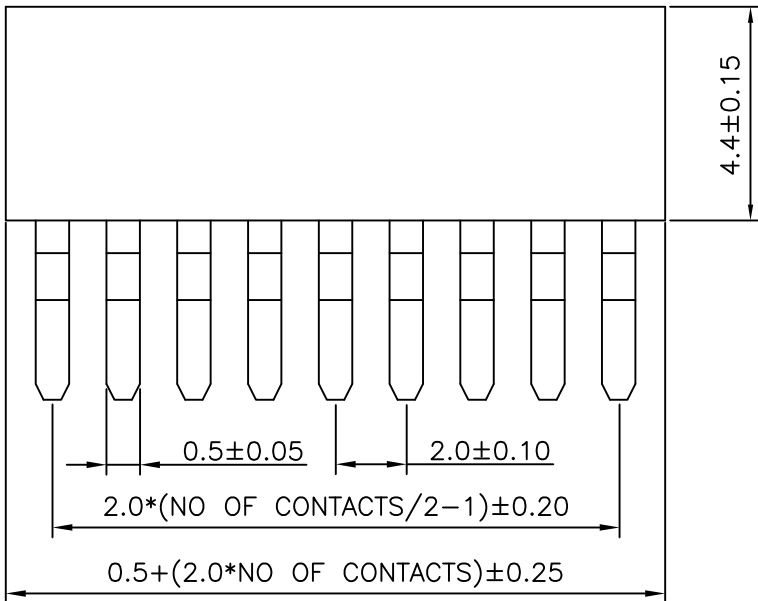
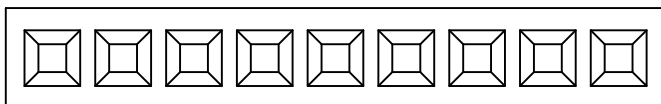


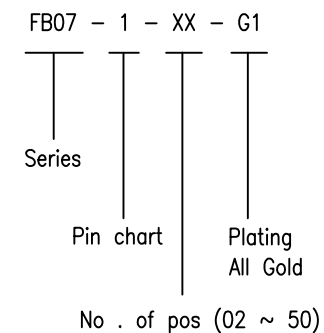
REV	ECN. NO.	APP.	DATE
B			



SPECIFICATION

- * Current Rating:
2 A
- * Withstanding Voltage:
500 VAC (1 min.)
- * Insulation Resistance:
1000 Megohms MIN.
- * Contact Resistance:
30 Milliohms MAX.
- * Operating Temperature:
-40°C to +105°C

ORDER INFORMATION

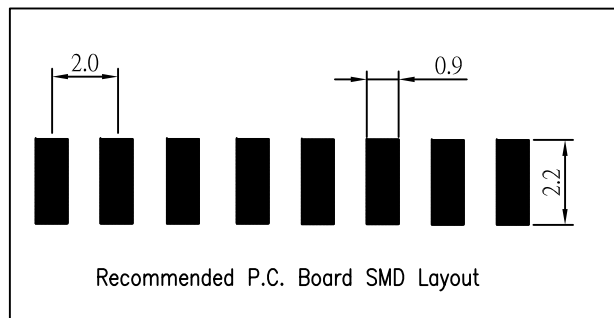


MATERIAL

- * Contact: Phosphor Bronze
- * Insulator: PA6T + 30% G.F.
- * Plating: All Gold

Pin Chart

Pin	A
1	3.5



(주)신화테크 SHINHWA TECH CO.,LTD TEL : 031-451-9441 FAX : 031-451-9444		0.0±	SCALE:	TITLE:	PART NO:
		0.00±	UNIT: MM	2.0MM Female Header Single Row Right Angle SMD	APP BY:
		0.000±		MATL: PA6T + 30% G.F.	CHK BY:
				DWG NO: FB07	DR BY: